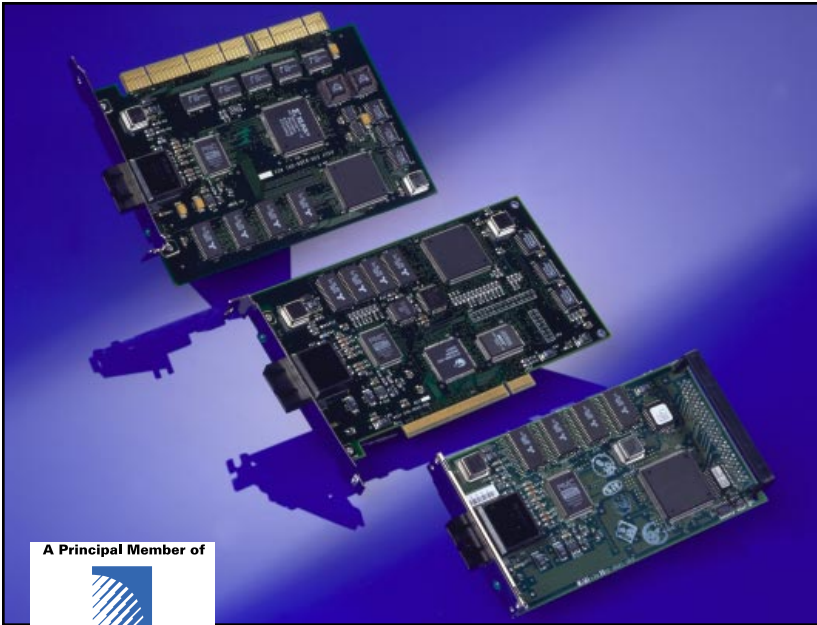




# ATM Power155

## PCI and EISA ATM Network Cards

### Fiber and UTP-5 Models



#### ATM Power to Your Desktop

SMC, a networking company with a well-established presence in Ethernet, Fast Ethernet and Token Ring, has leveraged off its experience to develop a family of ATM adapters for PCI and EISA computers.\* These ATM Power155™ adapters provide the bandwidth and features necessary for today's demanding applications—applications requiring guaranteed data rates and/or integrated voice, video and data. They employ a custom ASIC that provides a high-speed hardware implementation of the more complex functions of the ATM protocol: segmentation and reassembly (SAR), peak cell rate (PCR) based traffic shaping, and Direct Memory Access (DMA). As a result, the ATM Power155 adapters have the industry's best ATM price/performance ratio.

The adapters are standards-based. They have been extensively tested and have proven to be interoperable with all products based on ATM Forum specifications, and they currently support a wide range of network operating systems. What's more, SMC is committed to providing ongoing software support as ATM Forum specifications and developments by PC NOS leaders continue to evolve. And, the cards include a free SNMP agent plus SMC's EZ Configuration Management utility for quick and easy installation.

The adapters are offered with either 512 KB or 2 MB of on-board RAM for greater flexibility. Both configurations support as many as 1,024 Virtual Circuit Identifiers (VCIs) and are available with either Multimode Fiber (MMF) or Category 5 Unshielded Twisted-Pair (UTP) connectors, so you can preserve your current cabling infrastructure as you migrate to ATM.



\* Also available for SBus computers.

#### Features/Benefits

##### **Outstanding Performance**

- ◆ Support for VBR, CBR and UBR traffic with flexible traffic shaping and peak cell rate parameters to minimize congestion
- ◆ Full-speed support for AAL-5 traffic
- ◆ Up to 1,024 Virtual Connection Identifiers (VCIs)

##### **High Bandwidth**

- ◆ 155.52 Mbps SONET/SDH STS-3c/STM-1 transport

##### **Easy to Install and Use**

- ◆ SMC's EZ Configuration Management Software simplifies installation
- ◆ Extensive self-test and network diagnostics

##### **Compatible**

- ◆ Tested interoperable with switches from 3Com, AT&T, ATM Ltd., Bay Networks, Chipcom, CrossComm, Digital Equipment, Fore Systems, General DataComm, Hughes LAN Systems, IBM, NetEdge, Newbridge, UB Networks, XLAN
- ◆ UNI 3.0 and UNI 3.1 signaling

##### **Desktop Management**

- ◆ SNMP (AToM MIB)
- ◆ Interim Local Management Interface (ILMI)

##### **Versatile**

- ◆ Choice of two memory configurations: 512 KB or 2 MB of on-board RAM
- ◆ Choice of two media types: Multimode Fiber (MMF) or Category 5 UTP cabling
- ◆ Support for a wide range of platforms, including PC and PowerPC systems
- ◆ PVC and SVC connections

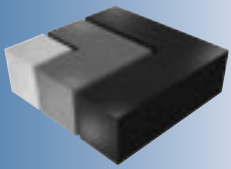
##### **Reliable**

- ◆ High MTBF
- ◆ Five-year warranty
- ◆ Free technical support

#### Support for Popular Network Operating Systems

- ◆ Support for Windows NT, NetWare MPR, NetWare 3.12/4.x and Windows 95
- ◆ LAN Emulation Client (LEC) included for transparent operation with traditional LANs
- ◆ Support for RFC 1577 and RFC 1483





**SMC** UNITY

Adapters  
Workgroup Hubs  
Workgroup Switches

SMC Offices Worldwide.  
For information, call or fax:

◆ SMC—Headquarters

Hauppauge, NY  
Phones: (800) SMC-4-YOU  
(516) 435-6000  
Fax: (516) 273-1803

◆ SMC—Canada

Oakville, Ontario, CANADA  
Phone: (800) SMC-4-YOU

◆ SMC—Latin America

Miami, FLORIDA  
Phone: (305) 264-7657  
Fax: (305) 264-8321

◆ SMC Mexico

Mexico City, MEXICO  
Phone/Fax: 525-671-0468

◆ SMC—France

St. Germain-En-Laye  
FRANCE  
Phone: 33 (1) 30.87.42.42  
Fax: 33 (1) 30.61.41.34

◆ SMC—Europe

Bracknell, Berkshire, UK  
Phone: 44 (0) 1344 418800  
Fax: 44 (0) 1344 418828

◆ SMC—Northern Europe

Bracknell, Berkshire, UK  
Phone: 44 (0) 1344 418820  
Fax: 44 (0) 1344 418826

◆ SMC GmbH—

Central Europe  
München, GERMANY  
Phone: 49 (89) 92861-100  
Fax: 49 (89) 92861-230

◆ SMC GmbH—

E. Europe/Middle East  
München, GERMANY  
Phone: 49 (89) 92861-142  
Fax: 49 (89) 9101934

◆ SMC—Australia

Sydney, AUSTRALIA  
Phone: 61.2.238.2206  
Fax: 61.2.238.2220

◆ SMC—Melbourne, AUSTRALIA

Phone: 61.3.653.9461  
Fax: 61.3.653.9548

◆ SMC—South Africa

Sandton, Johannesburg  
SOUTH AFRICA  
Phone: 27 (0) 11 784-0414  
Fax: 27 (0) 11 784-0519

◆ SMC—Asia

SINGAPORE  
Phone: 65-320-8391  
Fax: 65-320-8359

◆ TMC—Japan

Tokyo, JAPAN  
Phone: 81 (3) 57212271  
Fax: 81 (3) 57212270

◆ SMC—EliteFax™

Fax-on-Demand System  
US/Canada: (800) SMC-8329  
Elsewhere: (516) 435-6107

◆ World Wide Web

<http://www.smc.com/>

# ATM Power155

## PCI and EISA ATM Network Cards

### Fiber and UTP-5 Models

#### Specifications

#### Adapter Type

- 9741F (PCI, 512 KB RAM, MMF cable)
- 9741D (PCI, 512 KB RAM, UTP-5 cable)
- 9746F (PCI, 2 MB RAM, MMF cable)
- 9746D (PCI, 2 MB RAM, UTP-5 cable)
- 9742F (EISA, 512 KB RAM, MMF cable)
- 9742D (EISA, 512 KB RAM, UTP-5 cable)
- 9747F (EISA, 2 MB RAM, MMF cable)
- 9747D (EISA, 2 MB RAM, UTP-5 cable)

#### Network Interface

- SONET/SDH STS-3c/STM-1 (155.52 Mbps)
- SC-type optical connector
- Multimode Fiber (MMF)—2 km maximum
- Shielded RJ-45 connector
- UTP Category 5—100 m maximum

#### Weight

4 oz. (113.4 gm)

#### LED Indicator

SONET/SDH format signal

#### Diagnostic Tests

- Loopback
- DMA
- Interrupt
- Complete end-to-end

#### PC Bus Interface

32-bit burst-mode bus master

#### PVC and SVC Support

- 512 KByte RAM models
- 2 MByte RAM models

#### Traffic Scheduling

- VBR, CBR and UBR service
- User-selectable parameters for rate and congestion control

#### SVC Signaling

- Selectable ATM Forum
- UNI 3.0 (Q.93B) compliance
- UNI 3.1 (Q.2931) (in development)

#### Software Driver and OS Support

- Windows NT 3.51
- Windows 95
- NetWare 3.1/4.x
- NetWare MPR 3.x
- IBM AIX 4.1.4 (in development)

#### PVC Encapsulation

- Classical IP and ARP support (RFC 1577)
- Multiprotocol Encapsulation over ATM (RFC 1483)

#### SVC Encapsulation

- ATM Forum LAN Emulation Client (LEC) for 802.3 Ethernet
- ATM Forum LAN Emulation Client (LEC) for 802.5 Token Ring (in development)
- Classical IP and ARP support (RFC 1577) (in development)
- Multiprotocol Encapsulation over ATM (RFC 1483) (in development)

#### Configuration Management

- ILMI support in all drivers
- Separate configuration management utilities
- GUI based
- Command line

#### Operating Environment

- Temperature 32° to 158° F (0° to 70° C)
- Humidity, non-condensing 5% to 95%

#### Power Requirements

- +5 V @ 1.5 A (maximum)
- +12 V @ 0.02 A (maximum)

#### Compliances

- CE marking
- Safety
  - UL 1950
  - CSA 22.2 Number 950
  - EN60950
- Emissions
  - All models: EN 50082-1, VCCI-2 (pending)
  - PCI models
    - UTP-5 only: FCC Class A, CDOC A, EN55022-B
    - MMF only: FCC Class B, CDOC B, EN55022-B
  - EISA models
    - UTP-5 only: FCC Class A, CDOC A, EN55022-A
    - MMF only: FCC Class B, CDOC B, EN55022-B

#### Warranty and Support

- Hardware: 5-year warranty
- Software: ongoing support and upgrades

Product	Order Number	Description
ATM Power155	SMC9741F	PCI Adapter with 512 KB RAM, uses MMF Cable
	SMC9741D	PC I Adapter with 512 KB RAM, uses UTP-5 Cable
	SMC9746F	PCI Adapter with 2 MB RAM, uses MMF Cable
	SMC9746D	PCI Adapter with 2 MB RAM, uses UTP-5 Cable
	SMC9742F	EISA Adapter with 512 KB RAM, uses MMF Cable
	SMC9742D	EISA Adapter with 512 KB RAM, uses UTP-5 Cable
	SMC9747F	EISA Adapter with 2 MB RAM, uses MMF Cable
	SMC9747D	EISA Adapter with 2 MB RAM, uses UTP-5 cable

**SMC**  
STANDARD  
MICROSYSTEMS  
CORPORATION